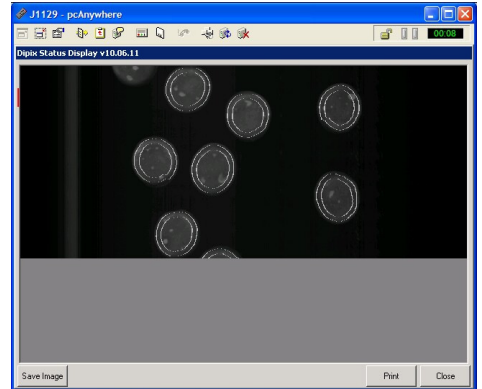


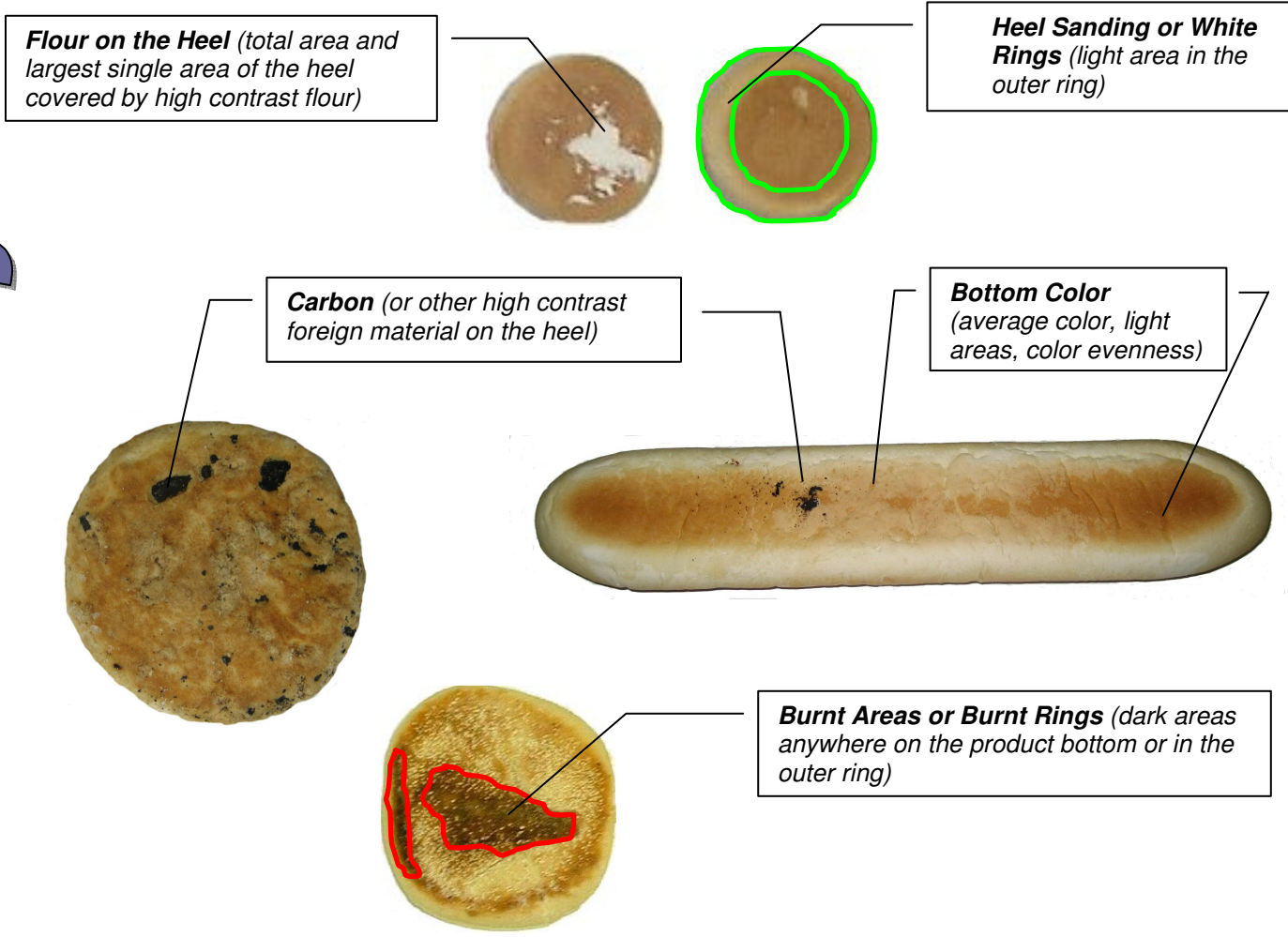
MONTROSE TECHNOLOGIES INC.

Bottom Color Module Measurements

The Bottom Color Module (BCM) produce images of the bottom surface of buns, bread loaves, pizza crusts, bagels and other similar products as they pass over a narrow gap at the entrance to the vision system. The bottom image is captured, the average bottom color is recorded, and the bottom image is inspected for faults such as carbon/foreign material, white rings/heel sanding and flour on the heel. The bottom measurements are then combined with the top color measurements and the 3-dimensional top height information to determine if the product piece should be rejected. Trend over time information can be used for automatic process control, data collection and reporting.



Inspection of the bottom of every product piece at production flow rates with rejection of individual pieces provides a capability not possible using manual inspection.



Product Analysis Description

Real-time Examples

Carbon/Black Area



Heel Flour



White Ring

