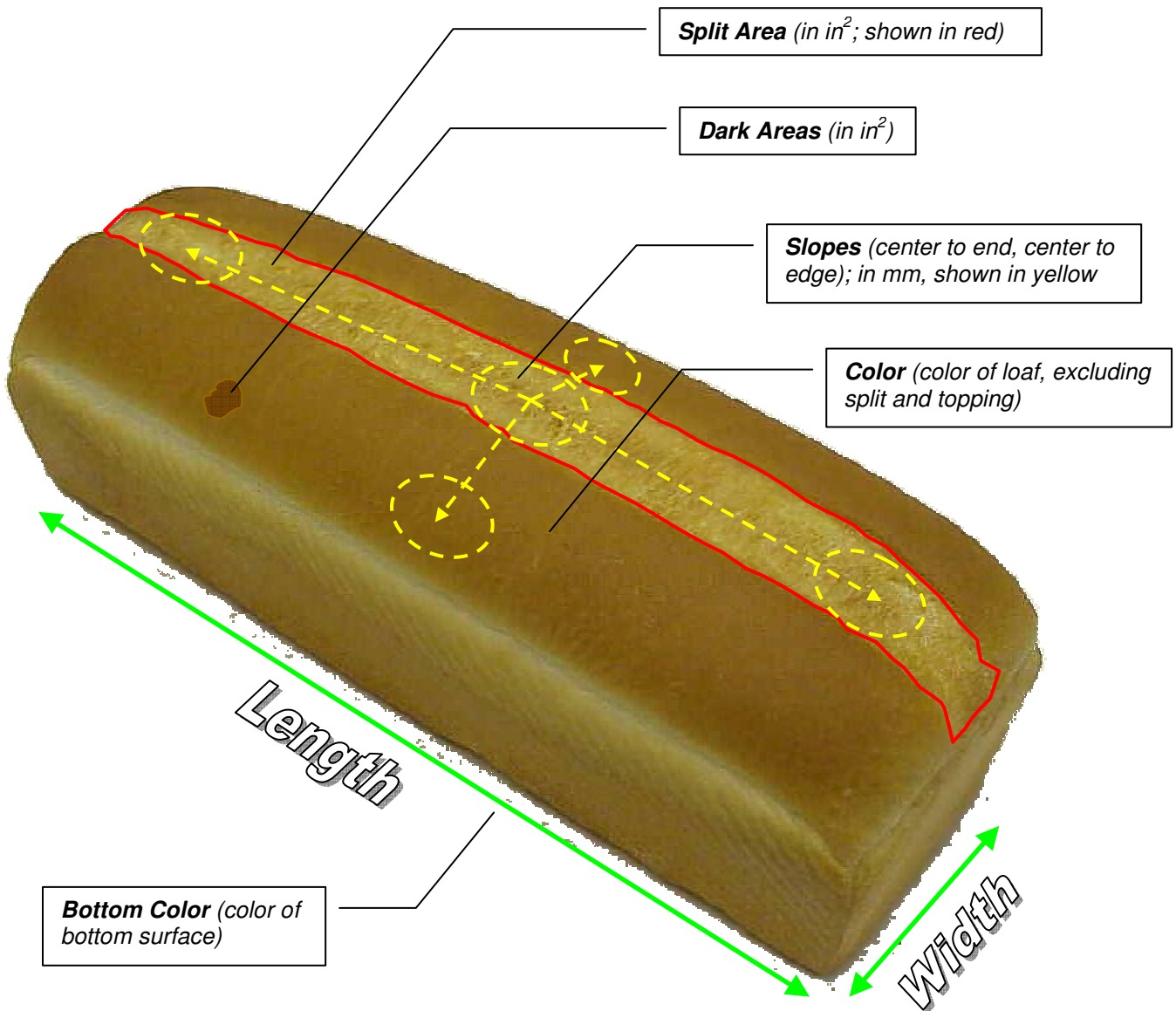
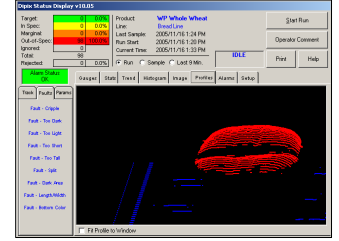


MONTROSE TECHNOLOGIES INC.

Every Montrose system uses a unique 3D imaging method to measure over 2000 individual height points on the top surface of every product. This height data is combined with a complete overhead image and allows every product to be measured in over 100 different ways (see image below for measurement examples). These measurements are displayed in real-time to the user, but can also be used for automatic process control, data collection and reporting, and to drive automatic rejection.



Other measurements (not shown):

Peak Height – the average of the highest 100 height points on the top surface

Topping Coverage – the area of the top surface covered by topping (in % or in²)

Topping Voids – the number of user-defined areas of the top surface NOT covered by topping

Bottom Surface Dark/Light Areas – the areas on the bottom surface that are significantly lighter (uncooked, flour, etc.) or darker (burnt debris)

Volume – the total volume of the product, in in³